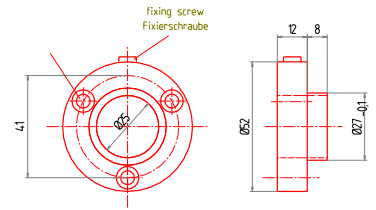


Clamping devices for rollers and sensors



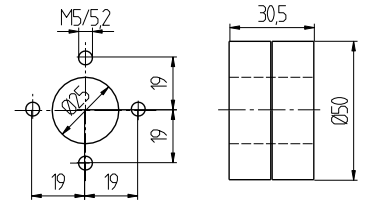
Z 1190 Ø 24 mm, hold on forces 50 N

This clamping device permits a fast and safe fixing of cylindrical bodies having a diameter of 24 mm, p.e. Tensometric radial force sensor series M 1191, M 1192, M 1391, M 1392



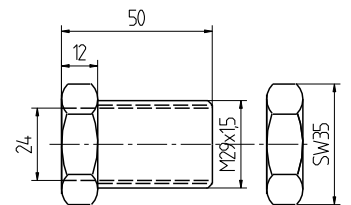
Z 1191 Ø 24 mm, hold on forces 500 N

It permits to suit the sensor infinitely variable in height and angle, into the running process. By means of 4 inside hexagon screws the sensor can be fixed in the measuring position. To fix the clamping device it needs only 4 bore-holes, Ø 5,2 mm or 4 thread-holes M5 and a bore hole Ø 25 mm for the sensor.



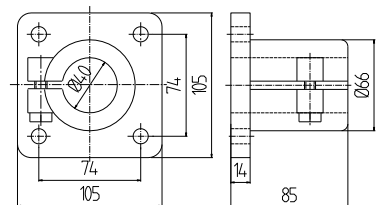
Z 1391 Ø 24 mm, hold on forces 500 N

To fix clamping devices and sensors, it is only necessary to have a bore-hole of approx. Ø 30mm in the machine-panel. In this bore-hole, the clamping device is fixed by means of its two nuts. Put in the sensor into the clamping-device Z 1391. By countering the two nuts, the bore-hole of the clamping-device Z 1391 reduces itself. by radial forces the sensor clamps are unremovable



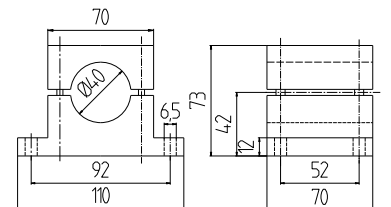
Z 40 A Ø 40 mm, hold on forces 5000 N

To fix rollers and sensors having a diameter of 40 mm in a mounting-panel.



Z 40 B Ø 40 mm, hold on forces 5000 N

To fix rollers and sensors having a diameter of 40 mm on a holder.



Z 25 B Ø 25 mm, hold on forces 200 N

To fix rollers and sensors having a diameter from 24 mm up to 25 mm on a holder.

