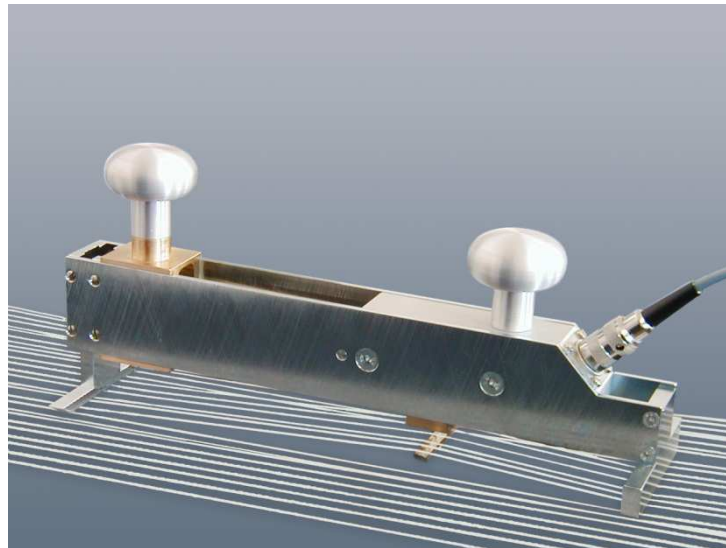


## WARP TENSIONMETER Type: Kett-03



The compact Kett-03 tensionmeter has been developed for measuring the tension forces of warp threads. A special mechanism enables the threading of warp threads, even when warp tensions are high and when threads are close together.

The total force of a warp up to a maximum width of 50mm, may also be measured and indicated on a separate gauge.

The straight design of the unit allows the measurement of tensions even at the edges of the warp.

The unit is versatile, measurements of the running warp may be taken vertically or horizontally.

**Nominal loads: 500 N, 1000 N, 2000 N or 3000 N for a 50 mm measuring width.**

Measurement of warp tension is very simple.....

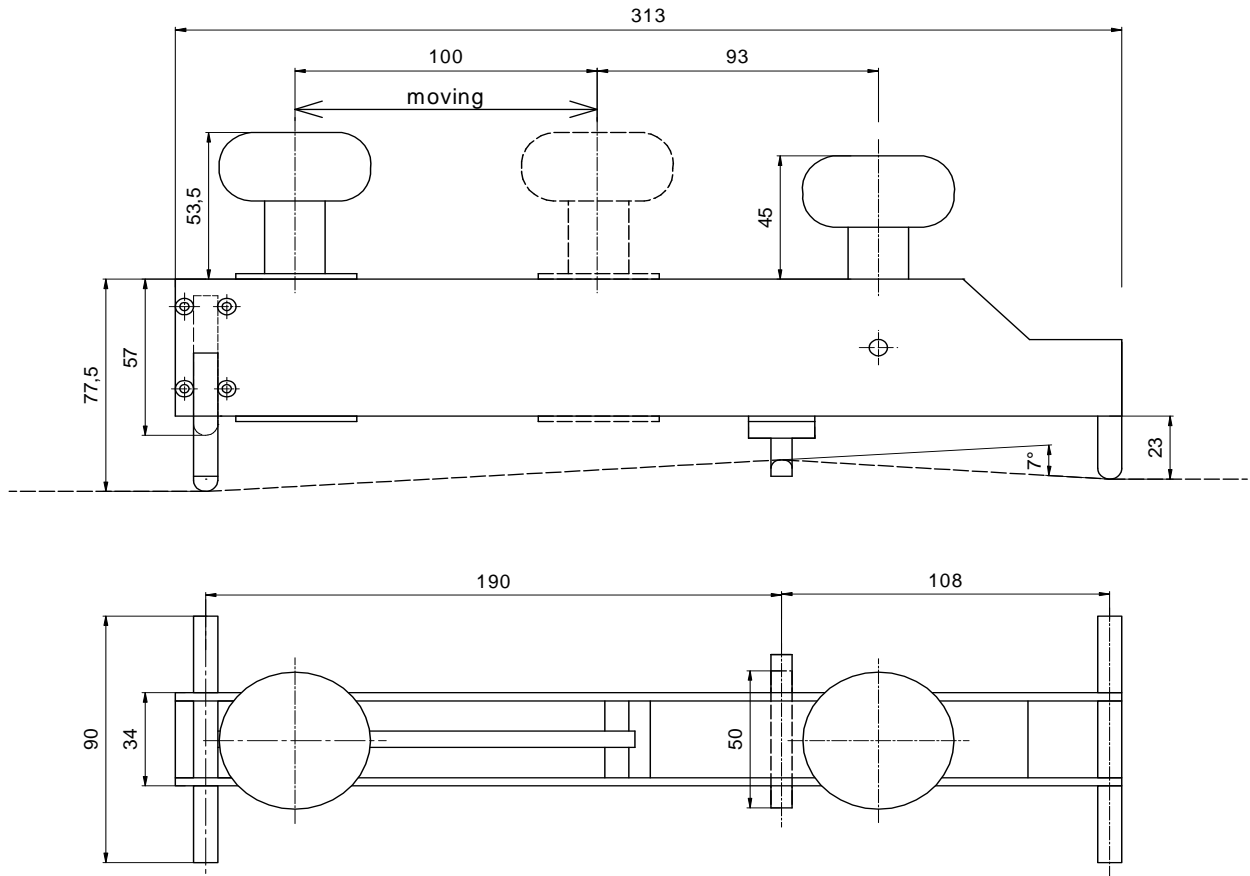
The forward 'movable knob' is pushed, causing the central measuring skid to protrude below the base of the unit. When the warp tensions are high, the unit is held perpendicular to the threads, and the measuring skid is passed between and below them. The unit is now turned in-line with the running direction of the warp - chamfered skids facilitate this operation.

The 'movable knob' is now returned to its original position and the measuring skid lifts the threads to be measured. The reading recorder is now in its measuring position, and the indicating instrument *DMS-TENS* shows the measured values.



## Kett 03

Dimensions:



*Housing:* Steel chromated / Aluminium anodised  
*Wight:* ca. 2,15 kg  
*Included in delivery:* Measuring head, instruction manual

**Nominal loads: 500 N, 1000 N, 2000 N, oder 3000 N for a 50 mm measuring width.**

*Resistant - input:* 350 Ohm  
*Resistant - output:* 350 Ohm  
*Charact. Temp. range:* + 5°C ...+ 50°C  
*Coef. of temperature:* < +/- 0,05 %/°C  
*Overload protection:* 4 - imes  
*Protection:* IP 50

*Error in meas. system:* < 0,3 %  
*Measuring principle:* strain-gage, full-bridge  
*Self - frequency* 300 Hz up to 500 Hz  
*Charact. value* 1,5 m V / V  
*Max. bridge-exitation* 10 V

## Indicating instrument DMS - TENS

Digital LCD – indication, battery powered

*Size of digits:* 10mm  
*Max. indication:* 19,99  
*Power supply:* 9V – Battery 6LR 61

*Output:* 0 → +1V  
*Dimensions:* 40mm x 30mm x170mm

*Included in delivery:* Indicating instrument DMS – TENS, instruction manual, connection cable, 2m long