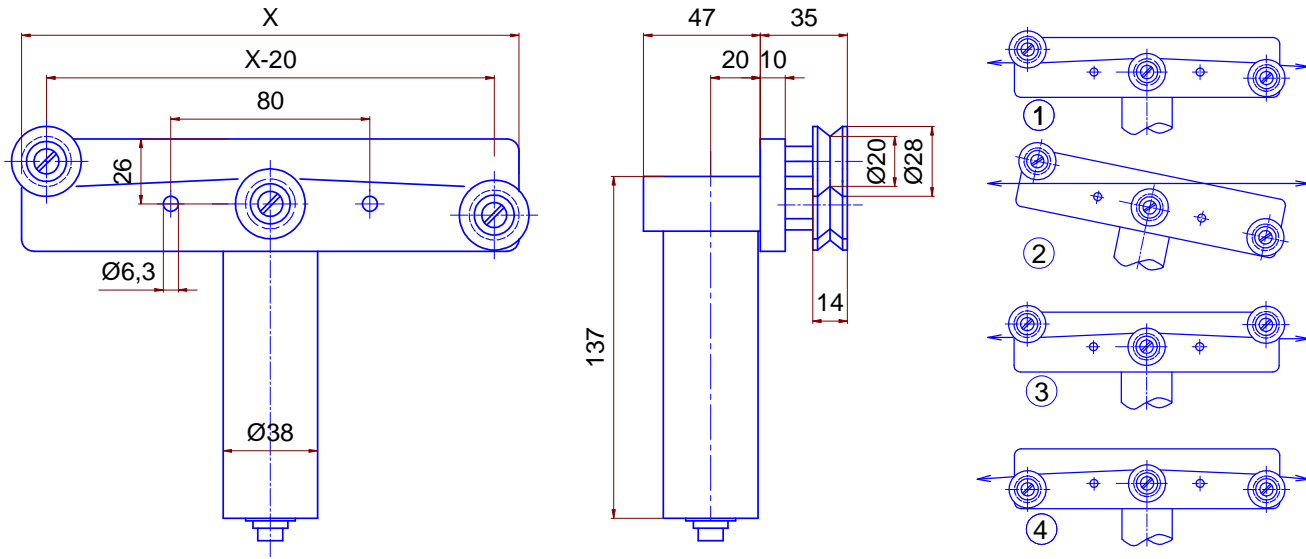


Dimensions Tensile Force Measuring Head Series M 156



X = according to the design 200 mm or 300 mm

- | | |
|--|---|
| 1) ideal arranged rollers - for measurement by hand easy threading of the material | 3) preferential roller-arrangement for installation no deviation of the normal material run |
| 2) by means of a light turn of the measuring head, you reach the measuring position (1) | 4) preferential roller-arrangement for installation, various diameter have no influence to the measurement - measurement without new calibration - |

M 156

Series M 156 can only be used together with a Tensometric amplifier.
For tension measurement by hand : MINI 710 is necessary.

Nominal loads	5 daN, 10 daN, 2 hN, 5 hN, 1 kN (1 hN = 10 daN ; 1kN = 100 daN)	<i>Angle of contact around the measuring roller</i> : 6 °
<i>Measuring range</i>	approx. 5 % to 100 % the nom.load	<i>Charact.range of temp.</i> + 10°...+ 35°C
<i>Error of the meas.system</i>	< 1%	<i>Coef.of temp.</i> < ± 0,1 % / °C
<i>Measuring principle</i>	capacitive	<i>Overload protection</i> min. 10 times
<i>Natural frequency</i>	150 Hz to 300 Hz acc.to the nom.load	<i>Protection</i> IP 40
<i>Volume of delivery</i>	measuring head, instruction manual	

M 356 (M 156 with built-in amplifier)

Technical data identical with M 156

<i>Service voltage</i>	5 V, 12 V, 24 V or ± 15V (adjusted from Tensometric)
<i>Output signal</i>	0 - 10 V, corresponding to 0 - 100 % of the nominal load
<i>Calibration</i>	potentiometer to adjust the electrical zero and the gain are available at the plug-side, by means of a screw-driver
<i>Volume of delivery</i>	measuring head with connector, instruction manual